

Meer End Road

Honiley, CV8

Asking Price: £275,000

ginger



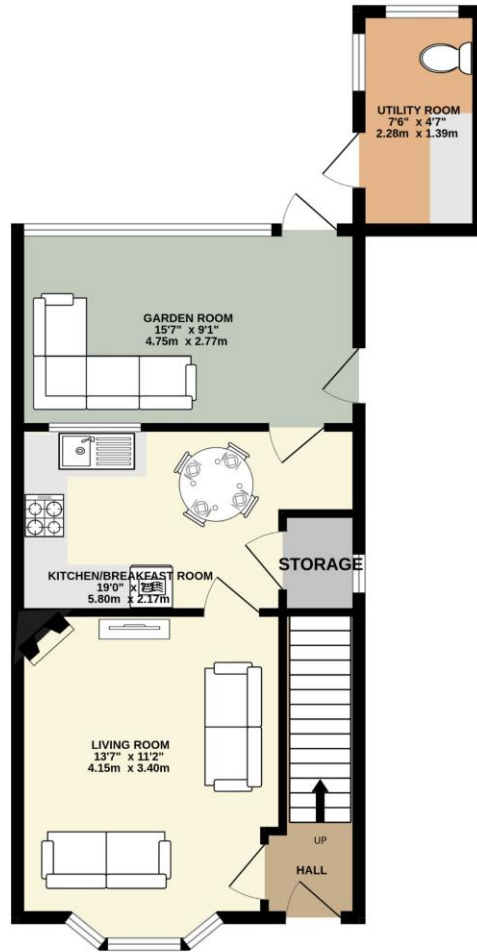
- A three bedroom semi-detached house
- Semi-rural location with easy reach to local villages
- Comfortable living room
- Breakfast kitchen
- Peaceful Garden room
- 3 good size bedrooms
- Gas central heating
- Generous front and rear gardens
- Lovley setting yet easy reach to major transport connections

A charming semi-detached country home with three generous bedrooms, living room, kitchen/breakfast room, garden room and spacious fore and rear gardens with countryside views. Ideal for a first time buyer or someone that wants unique location nestled between the local villages of Balsall Common, Hatton and Kenilworth.

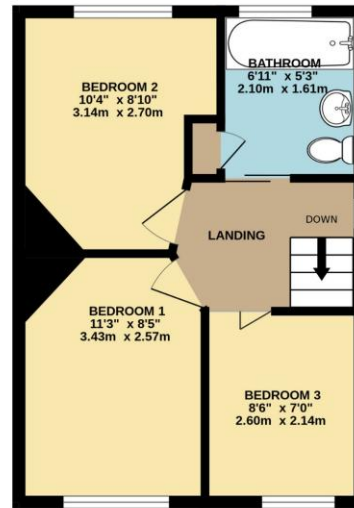




GROUND FLOOR
540 sq.ft. (50.1 sq.m.) approx.



1ST FLOOR
335 sq.ft. (31.1 sq.m.) approx.



3 BEDROOM SEMI-DETACHED HOUSE

TOTAL FLOOR AREA : 875 sq.ft. (81.2 sq.m.) approx.

Whilst every attempt has been made to ensure the accuracy of the floorplan contained here, measurements of doors, windows, rooms and any other items are approximate and no responsibility is taken for any error, omission or mis-statement. This plan is for illustrative purposes only and should be used as such by any prospective purchaser. The services, systems and appliances shown have not been tested and no guarantee as to their operability or efficiency can be given.
Made with Metropix ©2024



Energy Efficiency Rating		
	Current	Potential
<i>Very energy efficient - lower running costs</i>		
(92+) A		
(81-91) B		
(69-80) C		78
(55-68) D		
(39-54) E	36	
(21-38) F		
(1-20) G		
<i>Not energy efficient - higher running costs</i>		
England, Scotland & Wales	EU Directive 2002/91/EC	

ginger

259 Stratford Road
Shirley, B90 3AL

T:

E: enquiries@gingerhomes.co.uk

www.gingerhomes.co.uk

Whilst every attempt has been made to ensure the accuracy of the floor plans contained here, measurements of doors, windows and rooms are approximate and no responsibility is taken for any error, omission or mis-statement. These plans are for representation purposes only as defined by RICS Code of Measuring Practice and should be used as such by any prospective purchaser. The services, systems and appliances listed in this specification have not been tested and no guarantee as to their operating ability or their efficiency can be given.

