

Wyken Close

Dorridge, Solihull, B93

Offers in the region of:
£730,000

ginger



- Beautifully presented and modernised four bedroom extended detached house
- Set within a peaceful cul-de-sac
- Boasting an extended open-plan kitchen/dining space

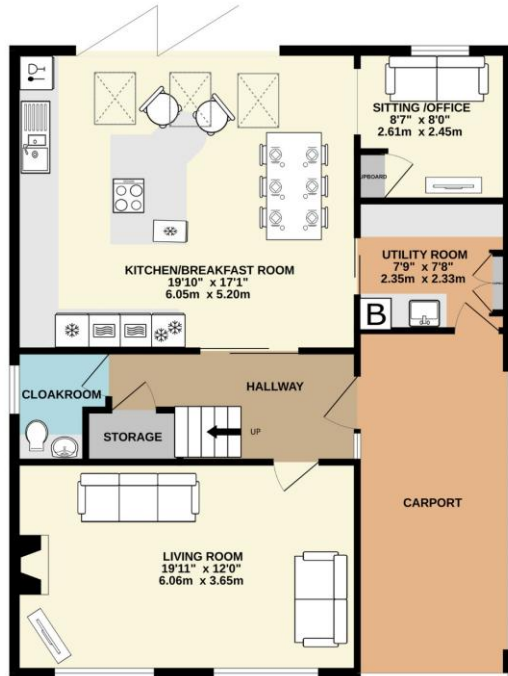
- Spacious living room with feature log burning fire
- Separate utility room and separate cloakroom
- Principal bedroom with modern en-suite shower room

A beautifully presented, bright and airy, extended 4 bedroom detached home set in a peaceful cul-de-sac. Having been totally modernised, boasting open-plan kitchen/diner/sitting area, south facing garden, separate lounge, large principal bedroom suite, and generous parking. Great house, sought-after location, ready to move in to enjoy.

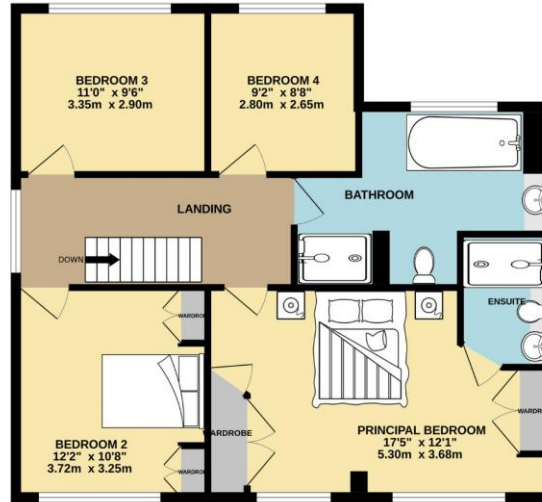




GROUND FLOOR
990 sq.ft. (92.0 sq.m.) approx.



1ST FLOOR
780 sq.ft. (72.5 sq.m.) approx.

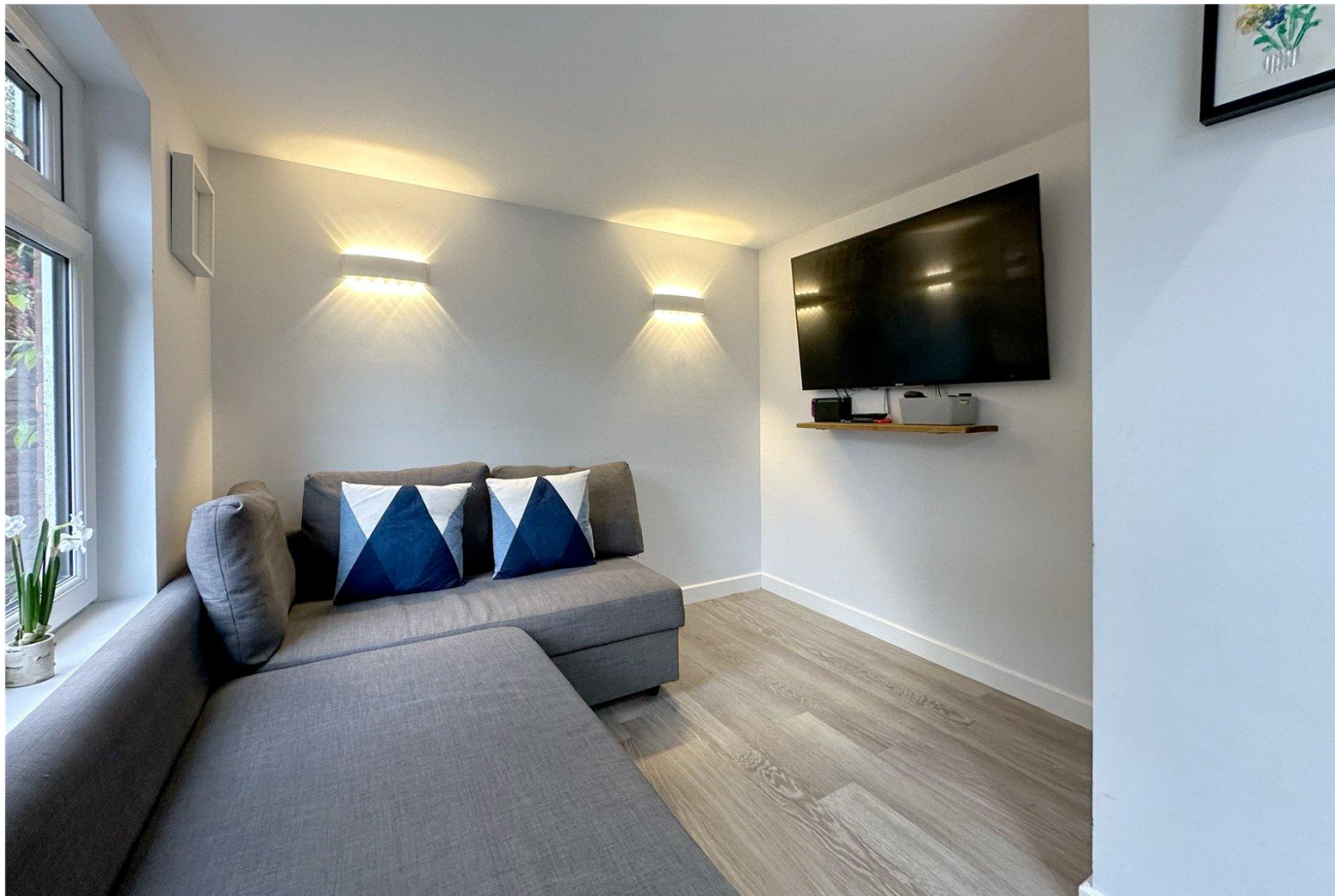


4 BEDROOM EXTENDED DETACHED HOUSE

TOTAL FLOOR AREA: 1771 sq.ft. (164.5 sq.m.) approx.

Whilst every attempt has been made to ensure the accuracy of the floorplan contained here, measurements of doors, windows, rooms and any other items are approximate and no responsibility is taken for any error, omission or mis-statement. This plan is for illustrative purposes only and should be used as such by any prospective purchaser. The services, systems and appliances shown have not been tested and no guarantee as to their operability or efficiency can be given.
Made with Metropix 62024





Energy Efficiency Rating		
	Current	Potential
Very energy efficient - lower running costs		
(92+) A		
(81-91) B		
(69-80) C		76
(55-68) D	60	
(39-54) E		
(21-38) F		
(1-20) G		
Not energy efficient - higher running costs		
England, Scotland & Wales	EU Directive 2002/91/EC	

ginger

259 Stratford Road
Shirley, B90 3AL

T:

E: enquiries@gingerhomes.co.uk

www.gingerhomes.co.uk

Whilst every attempt has been made to ensure the accuracy of the floor plans contained here, measurements of doors, windows and rooms are approximate and no responsibility is taken for any error, omission or mis-statement. These plans are for representation purposes only as defined by RICS Code of Measuring Practice and should be used as such by any prospective purchaser. The services, systems and appliances listed in this specification have not been tested and no guarantee as to their operating ability or their efficiency can be given.

